

EiffelRSS

Newsreader User Guide

Michael Käser <kaeserm@student.ethz.ch>

Martin Luder <luderm@student.ethz.ch>

Thomas Weibel <weibelt@student.ethz.ch>

Abstract

Newsreader is a simple RSS-feed reader which shows the possibilities of the EiffelRSS library.

Contents

1	Main features	1
2	The Main Window	1
2.1	The Menu Bar	1
2.1.1	“File” Menu	2
2.1.2	“Edit” Menu	2
2.1.3	“Channel” Menu	2
2.1.4	“Help” Menu	2
2.2	The Toolbar	2
2.3	The Feed List	3
2.4	The Feed Detail View	3
3	Preferences Dialog	4
4	The Debug Window	4
5	The Command Line Version	6

List of Figures

1	Screenshot of the main window of Newsreader	1
2	Screenshot of the feed list of Newsreader	3
3	Screenshot of the feed detail view of Newsreader	3
4	Screenshot of the preferences dialog of Newsreader	4
5	Screenshot of the debug window of Newsreader	5

1 Main features

- Simple and intuitive GUI
- Show any feeds (which are supported by EiffelRSS) and view information about the feed and all it's items
- Open the link of the items or feed in your favourite browser
- Easy adding and removing of feeds
- Multi user support
- Easy extensibility (eg. multi language support)

2 The Main Window

The main window is the place where you will spend most of the time while using Newsreader.

Figure 1 shows a screenshot of the main window.

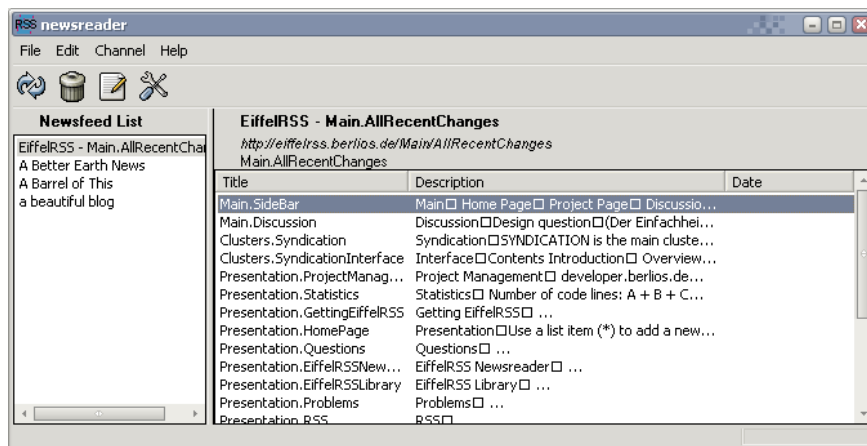


Figure 1: Screenshot of the main window of Newsreader

2.1 The Menu Bar

The menu bar consists of four items:

- File
- Edit
- Channel
- Help

2.1.1 “File” Menu

In the “File” menu, there’s just the option *Exit*, which will terminate the application.

2.1.2 “Edit” Menu

In the “Edit” menu, you can access the preferences dialog with the corresponding menu item.

2.1.3 “Channel” Menu





This menu has several items.

- *Add*: Show a dialog where you can enter an address to an RSS feed to add it to the subscribed feeds
- *Refresh*: Refresh the feed you are currently viewing (this will restore any deleted items, as long as they are still in the feed).
- *Feed information*: Show a dialog window with information about current feed
- *Item information*: Show a dialog window with information about the currently selected feed item
- *Remove feed*: Permanently remove the feed that is currently displayed
- *Remove item*: Remove the currently selected feed item (when the feed is refreshed, all items of the feed will be added again)
- *Refresh all*: Refresh all feeds

2.1.4 “Help” Menu

The only item in this menu is *About*, which will show you information about the application’s version and its developers.

2.2 The Toolbar

-  Refresh all feeds
-  Remove currently selected feed or item
-  Show dialog with information on currently selected feed or item
-  Show preferences dialog

2.3 The Feed List

The feed list shows all subscribed feeds. When you click on one of them, the feed detail view will show it's items.

Figure 2 shows a screenshot of the feed list.



Figure 2: Screenshot of the feed list of Newsreader

2.4 The Feed Detail View

The feed detail view shows the items of the currently selected feed. You can double click an item to open it in your browser. The title of the current feed is shown at the top along with its link and description.

Figure 3 shows a screenshot of the feed detail view.

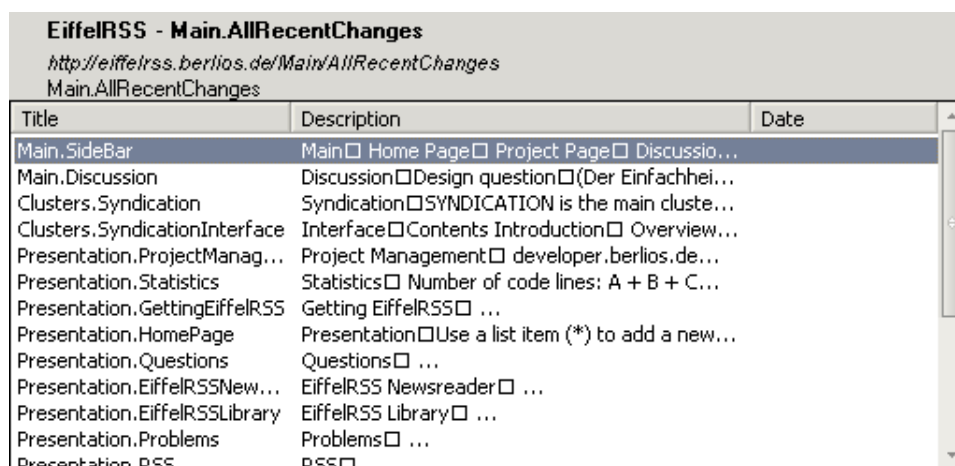


Figure 3: Screenshot of the feed detail view of Newsreader

3 Preferences Dialog

This is the place where you can configure Newsreader.

Figure 4 shows a screenshot of the preferences dialog.

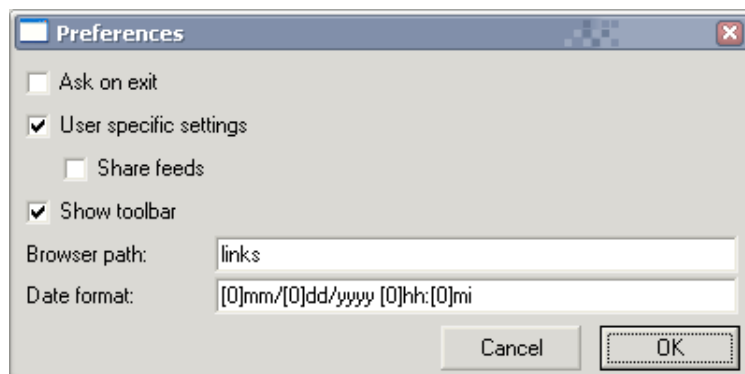


Figure 4: Screenshot of the preferences dialog of Newsreader

The following options are available:

- *Ask on exit*: When this check button is selected, a dialog will ask you whether you want to exit the application before it closes.
- *User specific settings*: When this check button is selected, Newsreader will save the preferences in a user specific file (Windows: `\newsreader\`, Unix: `/.newsreader/`)
- *Share feeds*: When this check button is selected, Newsreader will not store the information about the subscribed feeds in a user specific file (This option is only available if *User specific settings* is selected).
- *Show toolbar*: When this check button is deselected, the toolbar will be hidden.
- *Browser path*: Path to your browser executable.
- *Date format*: The format, in which the dates are shown.

4 The Debug Window

In the debug window, you can see the log of Newsreader (which is saved to `newsreader.log`) and the preferences (select *Show properties* to see them, and click *Refresh* to update them). You can disable the debug window with the command line argument `-no_debug_window`.

Figure 5 shows a screenshot of the debug window.

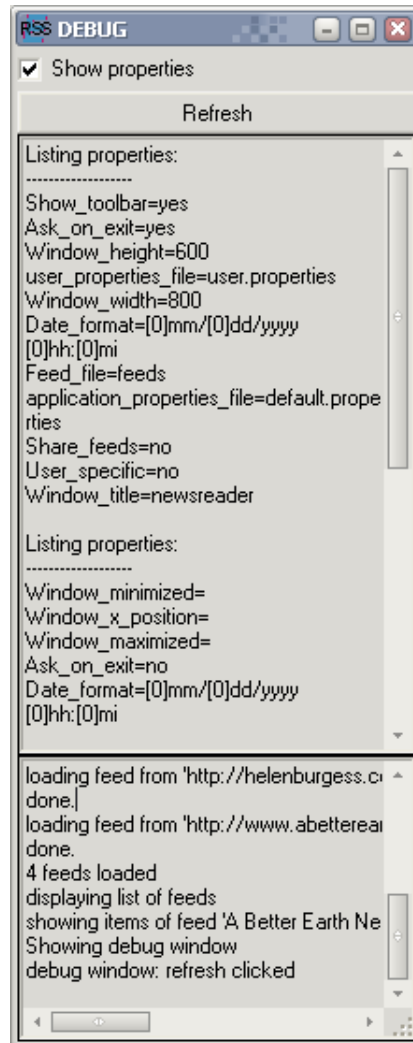


Figure 5: Screenshot of the debug window of Newsreader

5 The Command Line Version

There is a command line version of Newsreader, which can be started by providing the command line parameter `-cl`.

It is not feature complete, though. It is not possible to change preferences and to add feeds (though you can add your feeds to the `feeds` file). It just loads any feeds in the `feeds` file. It is possible to see a list of feeds, a list of the items of a feed, information on a feed or item and to open an item in your browser (you could choose eg. `links` to open it directly in the console).

Information on the available commands and their description are always available with the `help` command.